

SQUARES-1

Süllyesztehető LED lámpatest
Recessed LED luminaire

SZERELÉSI ÚTMUTATÓ

A lámpatest telepítését és karbantartását csak képzett szakember végezheti! Kérjük, vegye figyelembe a LED fényforrás élettartamára vonatkozó előírásokat! Sérült üveget azonnal ki kell cserélni! A garancia azonnal érvényét veszti, ha a vevő a lámpatesten a gyártó előzetes engedélye nélkül bármilyen módosítást végez! Szakszerűtlen felszerelésből vagy extrém üzemeltetési körülményekből származó meghibásodás esetén a garancia érvényét veszti! A szerelési útmutatót kérjük, őrizze meg!

MAXIMÁLIS KÖRNYEZETI HŐMÉRSÉKLET 35 °C 

INSTALLATION INSTRUCTION

The luminaire may only be installed and maintained by qualified technicians! Please pay attention to LED light-source lifetime! The damaged or broken glass must be replaced immediately! Any modifications of the luminaire structure without supplier's permission can end product guarantee! In case of any failure caused by unprofessional installation or operating under extreme conditions the product may end! Please retain these instructions for later reference!

MAXIMUM AMBIENT TEMPERATURE 35 °C 

Installation Procedure

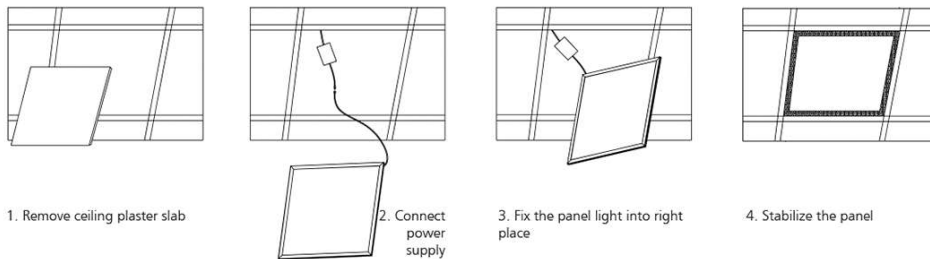
WARNING

1. Switch off before installation.
2. Switch on only after complete installation and examination of the circuit.
3. Professional electrician for installation and maintenance only.

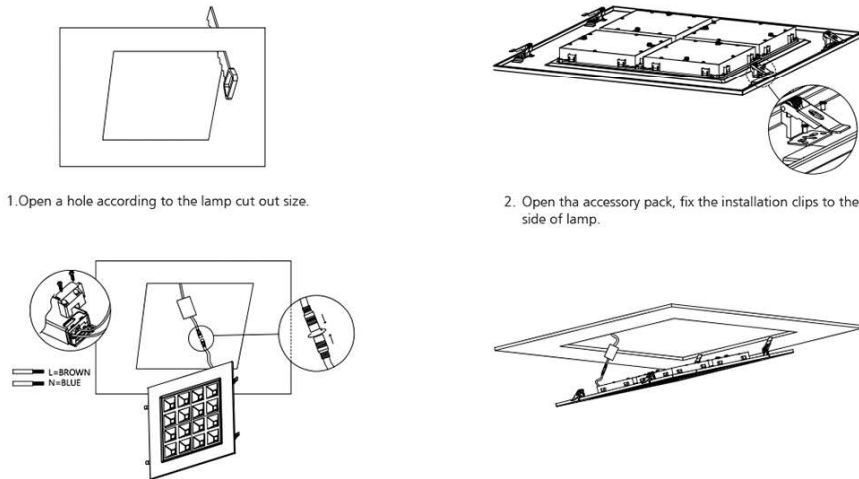


Turn Off power supply before starting any installation. Read instructions & check you have all the tools & accessories to complete the installation correctly.

Recessed into ceiling(1)



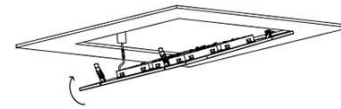
Recessed into ceiling(2)



301266

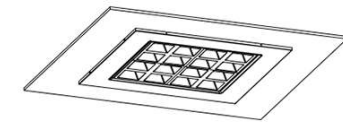


3. Connect DC wire.



4. Fasten one side of clips with the ceiling.

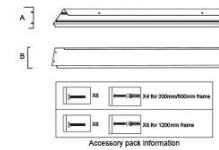
4. Fasten one side of clips with the ceiling.



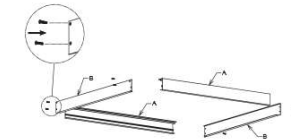
5. Fasten the other side of clips.

6. Turn on the power, installation completed.

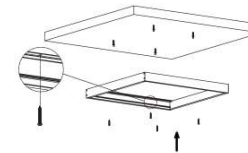
Surface mounted



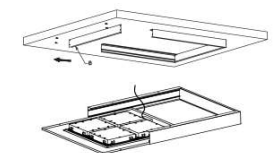
1. Unpack box and take out aluminum profile A - 2pcs, aluminum profile B - 2pcs, as well as accessory pack.



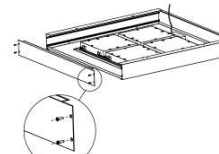
2. Assembling 3 pieces aluminum profile together with screw.



3. Fix semi-finished frame onto ceiling with screw (Concrete ceiling requires plastic anchor).



4. Slide panel into frame properly.

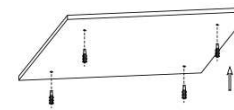


5. Fix the last piece of aluminum profile with screw after panel is well placed.

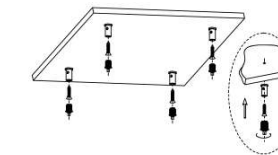


6. Switch on and check for correct operation.

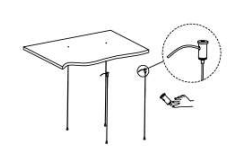
Suspended



1. Take out the lamp and accessory pack from box. Fix the anchor into target place on the ceiling.



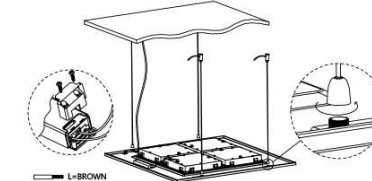
2. Fix the installation mount on the ceiling with tapping screw, fix the wire locking clips to the installation mount.



3. Through the steel wire into the wire cap, adjust the length of steel wire.



4. Twist the wire cap to fasten it into wire locking clips, feed the main AC wire.



L-BROWN
N-BLUE

5. Turn on the power, installation completed.