

LUMIAIR45A

Felületre szerelhető, függeszthető
LED lámpatest
Surface Mounted, suspended
LED luminaire

SZERELÉSI ÚTMUTATÓ

A lámpatest telepítését és karbantartását csak képzett szakember végezheti! Kérjük, vegye figyelembe a LED fényforrás élettartamára vonatkozó előírásokat! Sérült üveget azonnal ki kell cserélni! A garancia azonnal érvényét veszti, ha a vevő a lámpatesten a gyártó előzetes engedélye nélkül bármilyen módosítást végez! Szakszerűtlen felszerelésből vagy extrém üzemeltetési körülményekből származó meghibásodás esetén a garancia érvényét veszti!
A szerelési útmutatót kérjük, őrizze meg!

MAXIMÁLIS KÖRNYEZETI HŐMÉRSÉKLET 35 °C 

INSTALLATION INSTRUCTION

The luminaire may only be installed and maintained by qualified technicians! Please pay attention to LED light-source lifetime! The damaged or broken glass must be replaced immediately!
Any modifications of the luminaire structure without supplier's permission can end product guarantee! In case of any failure caused by unprofessional installation or operating under extreme conditions the product may end!
Please retain these instructions for later reference!

MAXIMUM AMBIENT TEMPERATURE 35 °C 

Installation Procedure

WARNING

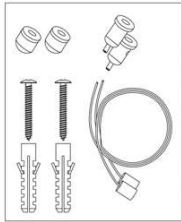
1. Switch off before installation.
2. Switch on only after complete installation and examination of the circuit.
3. Professional electrician for installation and maintenance only.



Turn Off power supply before starting any installation. Read instructions & check you have all the tools & accessories to complete the installation correctly.

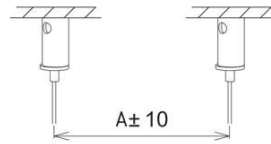
■ Suspended:

Step 1



Fix the holders of suspending ropes on the ceiling.

Step 2

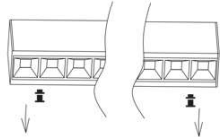


Model	A±10
600mm	580mm
1200mm	1180mm

Keep the proper distance of the 2 pcs suspending ropes as below table.

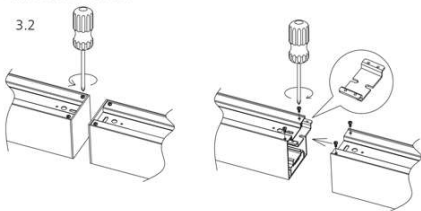
Step 3

3.1



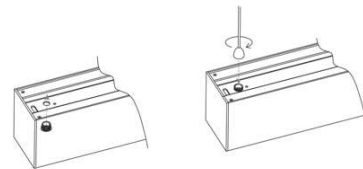
Push the module on both sides which will disconnect the connector, remove the module.

3.2



If need to be spliced into series, remove the end cap of each connection side, connect them by connectors and fix by screws.

Step 4



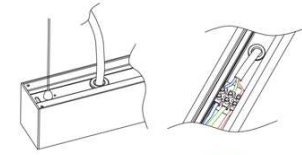
Screw the ropes into the pedestals.

IK08 **LED** IP20



301299

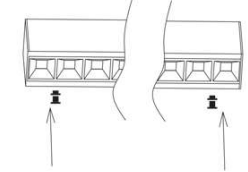
Step 5



Connect to the power supply.



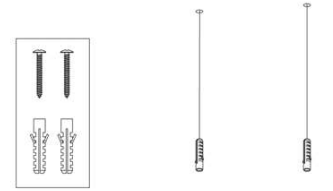
Step 6



Put the module back and push it into the base, turn on the lamp.

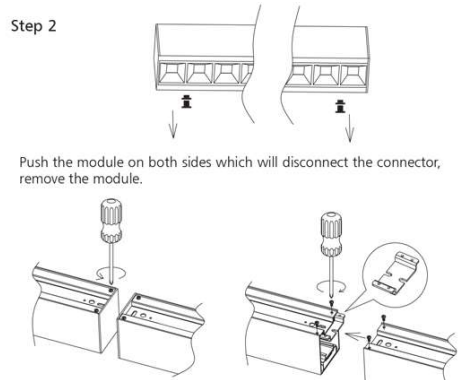
■ Surface mounted:

Step 1



Insert the plastic anchor into the ceiling.

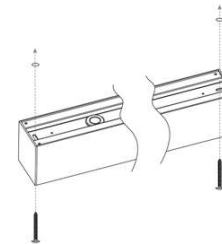
Step 2



Push the module on both sides which will disconnect the connector, remove the module.

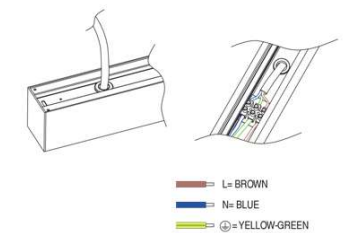
If need to be spliced into series, remove the end cap of each connection side, connect them by connectors and fix by screws.

Step 3



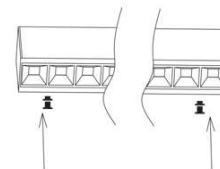
Fix the base on the ceiling.

Step 4



Connect to the power supply.

Step 5



Put the module back and push it into the base, turn on the lamp.